

Residence 110



LUXURY LIVING IN THE HEART OF BUSINESS BAY

Residence 110 delivers a limited selection of elevated cosmopolitan living experiences in the heart of Business Bay.

Exquisite architecture coupled with a modern, spacious design, Residence 110 is the perfect offering of ready-built premium residences, with a seamless connection to the city's most sought-after hotspots.





CONNECTING THE CITY'S DESTINATIONS WITH EASE

Minutes from the Dubai Canal and Downtown Dubai, together with swift access to Sheik Zayed Road and Al Kahil Road, Residence 110 sits in a truly privileged and convenient location.

Whether heading out for work, off to the airport or an outing with the family, accessing the city's most sought-after locations has never been such a breeze.



Residence 110







REFINED COMFORT

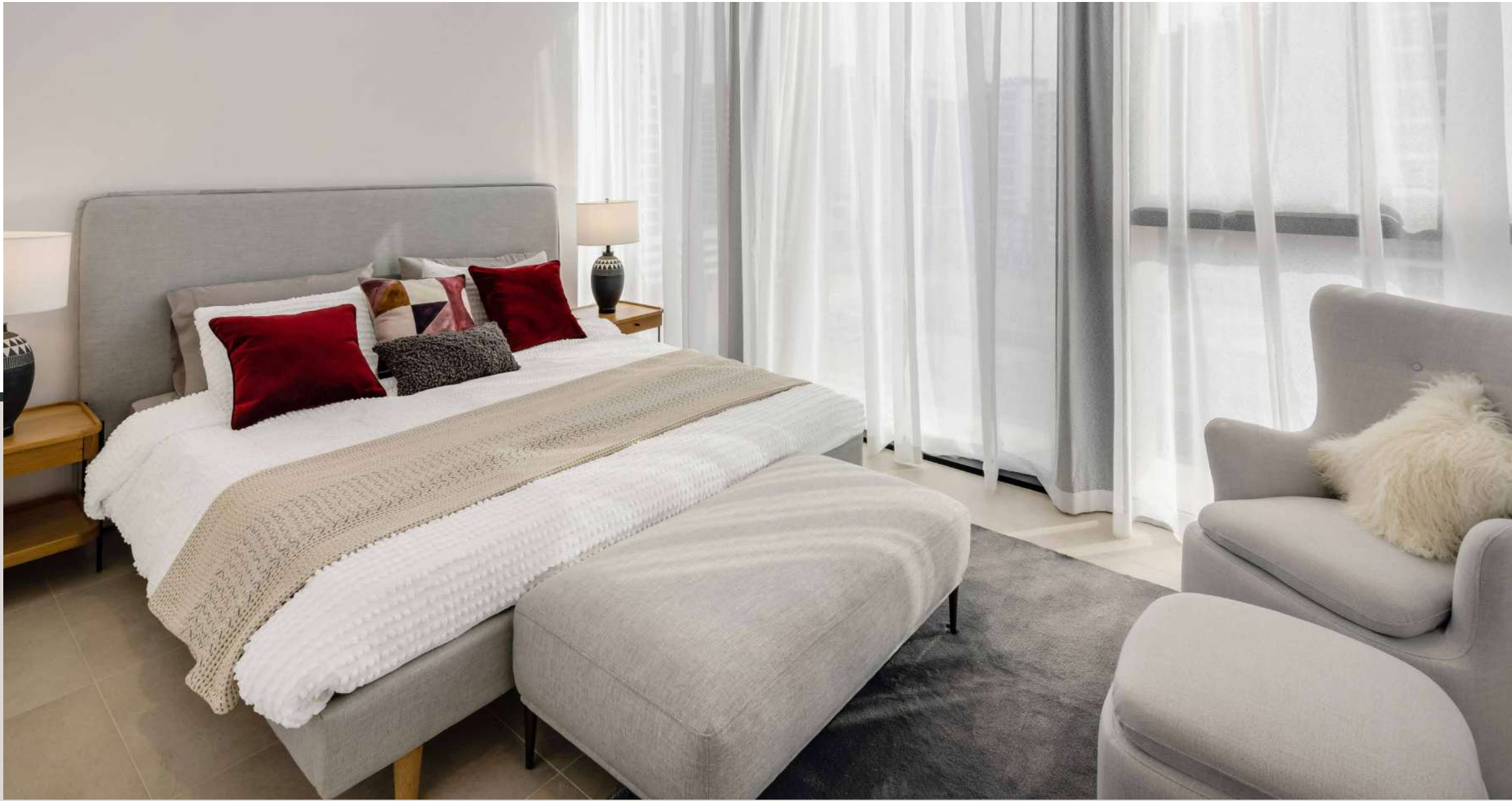
Refined architectural design coupled with uncompromising interior detail in all public areas sets a positive tone of elegance yet welcoming residential living.

Perfectly balancing premium finishes with everyday comfort, Residence 110 features a selection of spacious one, two and three-bedroom units, all with fully equipped kitchens and premium white goods, as well as prime glazing for optimal isolation and large floor-to-ceiling windows inspiring a welcomed surge of natural light.









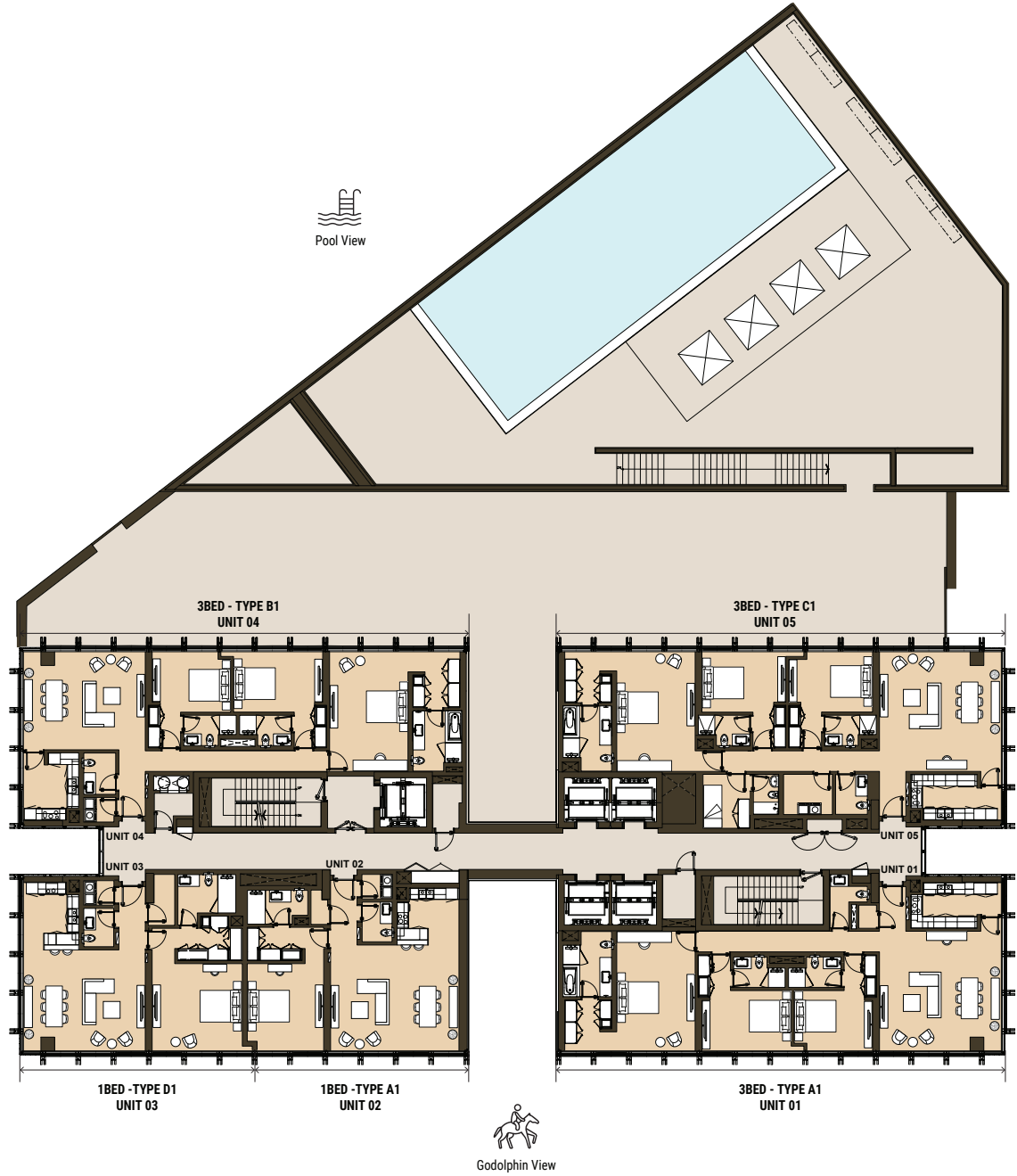


Each of the units comprises of fully equipped kitchen with white goods, large ensuite bathroom in the master bedroom, built-in wardrobes and laundry cabinet.

One Bedroom (from 1,023 sq.ft)
Two Bedroom (from 1,235 sq.ft)
Three Bedroom (from 1,723 sq.ft)



1ST FLOOR



2ND FLOOR



3RD FLOOR



4TH FLOOR



6TH & 8TH
FLOOR



5TH, 7TH & 9TH
FLOOR



10TH FLOOR



11TH, 13TH, 15TH & 17TH
FLOOR



12TH, 14TH, 16TH & 18TH
FLOOR



Burj Al Arab View



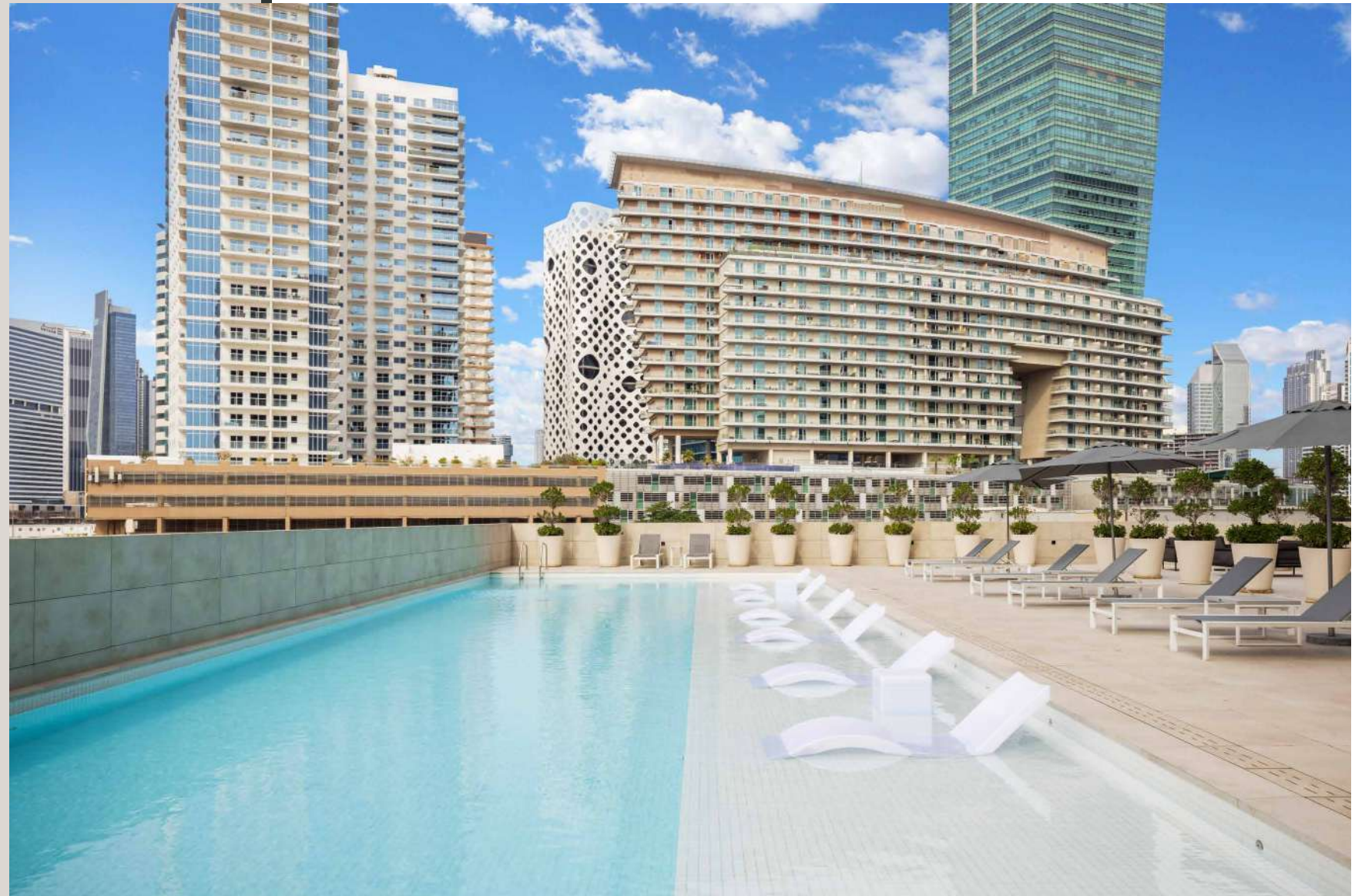
19TH FLOOR

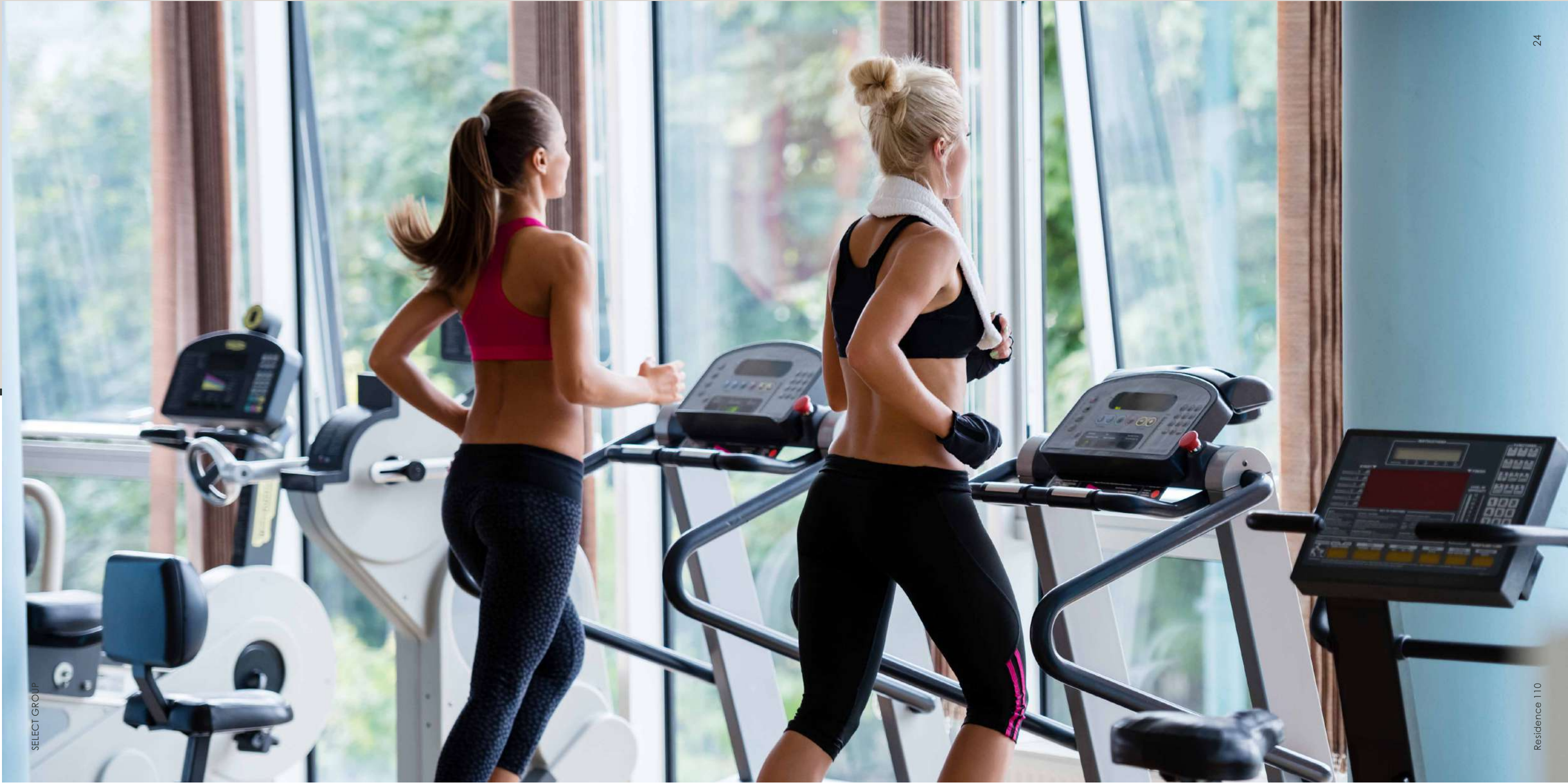


WELLNESS & LIFESTYLE

Burning calories, lazing by the pool or out on the cycling track, residents have no shortage of leisure and fitness options available.

Spacious fully equipped 7/24 gymnasium, outdoor swimming pool with sun loungers, and changing facilities are available on the ground floor.





Pedal enthusiasts will be able to access the Meydan cycling circuit within metres from their doorstep, while outdoor runners can cruise along the Dubai Canal for their session, taking in the sites of Downtown Dubai.



PAYMENT PLAN

INSTALLMENT	MILESTONE	PAYMENT
1	Upon Reservation	100K AED
2	After 5 working days	25% (SPA stage)
3	After 3 months from reservation	25%
4	After 6 months from reservation	25%
5	After 12 months from reservation	25% DLD fee + Trustee fee +Admin fee

Contact Us On
00971 50 1515 079